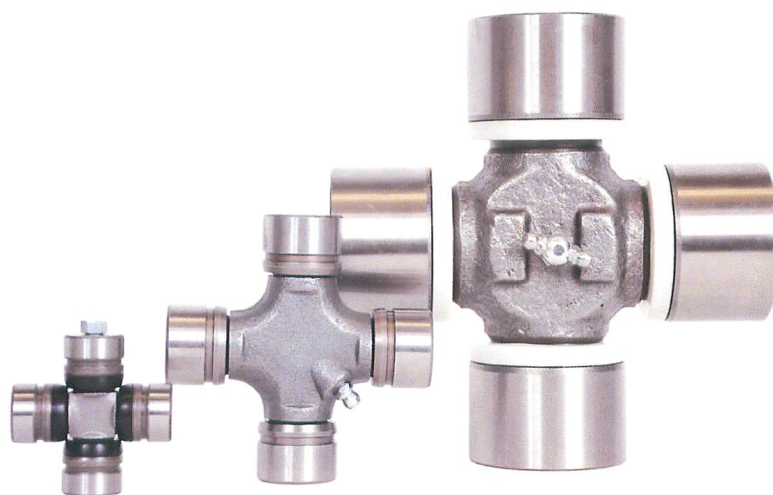


ROCKFORD DRIVELINE 

UNIVERSAL JOINTS



*SPECIFICATIONS
AND
OPTIONS*

Suggestions for Measuring Universal Joint Kits

Before measuring a universal joint you should...

Remove it from the shaft

Remove the bearing caps

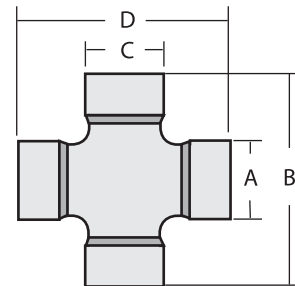
Remove excess grease from the bottom of the bearing caps & trunnion

Remove the seals from the bearing caps or trunnions Note: the seals are removed to allow for an accurate compress measurement.

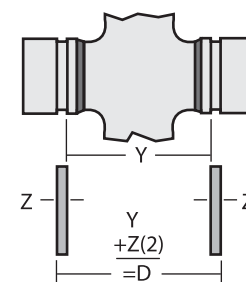
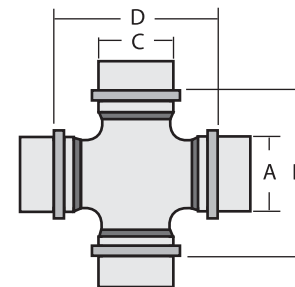
Measure as follows, permitting yourself a tolerance of .005 at the OAL dimension & .003 at all other dimensions.

Outside Snap Ring Style

- Measure "B & D" dimension & record
- Measure "A & C" dimension & record
- Does your U-Joint have a lube fitting?
- Where is the lube fitting located? In Cross? In Cap?
- If further identification is necessary, measure the cross dimensions without cups and the thickness of the snap rings then notify us via e-mail.
- Note: dimensions may vary between manufacturers.



- Measure "B & D" dimension & record. Note: Measurement includes thickness of snap rings. To determine dimension "B & D" the following method is suggested.
- Measure from inner edge of opposite snap ring grooves in bearing caps as illustrated.
- Measure thickness of TWO snap rings.
"B & D" dimensions = $Y + Z$
- Measure "A & C" dimension & record
- Does your U-Joint have a lube fitting?
- Where is the lube fitting located? In Cross? In Cap?
- If further identification is necessary, measure the cross dimensions without cups and notify us via e-mail.
- Note: dimensions may vary between manufacturers.



ROCKFORD ***Drive Line***

TABLE OF CONTENTS

	PAGE
BEARING PLATE STYLE	19
BLOCK BEARING STYLE	22
COMBINATION KITS BLOCK & ROUND	27
COMBINATION KITS BLOCK & WING	25
COMBINATION KITS INSIDE SNAP RINGS	15
COMBINATION KITS INSIDE & OUTSIDE SNAP RINGS	16-18
COMBINATION KITS OUTSIDE SNAP RINGS	10
COMBINATION KITS ROUND & WING	26
DETROIT POT STYLE	30
HALF-ROUND STYLE	20
HARDWARE KITS	7
INSIDE SNAP RINGS	11-14
KNURLED BEARING STYLE	21
OUTSIDE SNAP RINGS	8-9
SLOTTED STYLE	21
STAKED-IN SPECIALITY KITS	28-29
THREADED CAP STYLE	21
WING BEARING STYLE	23-24

Notice: The data contained in this catalog has been thoroughly checked for accuracy, however we cannot assume any responsibility for errors, omissions or typographical mistakes that may appear.

All data is property of ©Rockford Drive Line and may not be duplicated or used in any way without written authorization.



The Rockford “Advantage” ...

For over half a century Rockford has engineered and manufactured universal joints for the drivetrain industry “worldwide”.

Rockford’s universal joint kits are engineered to improve vehicle performance, increase service life and provide a quieter, smoother operating drivetrain assembly.

Our u-joints give you the extensive coverage required to service Passenger Cars; Light Medium & Heavy Duty Trucks; Off-Highway Equipment, Agricultural & All Terrain Vehicles.

Standard Universal Joints...

- Select raw materials, superior design and closely monitored forging process results in increased static strength and longer service-life.
- Precision ground trunnion and bearing surfaces insure trouble-free operation.
- Most of the u-joints are provided with an exclusive multi-lip TPE seal to offer better retention of lubricants while withstanding the most severe road and temperature conditions.
- Unlike most OEM u-joints, Rockford’s standard u-joints can be greased.

Heavy Duty Universal Joints...

- Our High Performance / Heavy-Duty Universal Joints are forged from high-strength Chrome-Nickel steel to meet the demands of rugged applications.
- Designed with a solid cross that provides superior strength for the toughest applications.
- Pre greased with the exact amount of life extending, high performance synthetic grease.

Fun in the Mud Universal Joints...

- Designed specifically for early model 4WD applications with wheel type u-joints.
- Most of the u-joints are provided with an exclusive multi-lip TPE seal to offer better retention of lubricants while withstanding the most severe off-road conditions.
- These u-joints have the convenience of a lube fitting in the bearing cup for easier lubrication after installation and during the relubrication cycle.

Aluminum Universal Joints...

Aluminum usage in North American cars and light trucks has climbed from an average 50 pounds per vehicle fifty years ago to 250 pounds today. A portion of this increased usage is directly attributed to aluminum drivetrain components and assemblies. Many newer driveshafts are manufactured using aluminum. Aluminum will continue to penetrate the automotive market. The automakers find the alloy to have more than just weight savings, Including:

- Improved vehicle performance through better accelerations along with reduced noise and vibration....
- Environmental benefits that include 100 percent recyclability....
- Improved fuel efficiency that results in increases in gasoline mileage of six percent for every 10 percent reduction in weight...

It is important to note that aluminum requires special care. The corrosion that occurs when aluminum comes in contact with steel will cause rapid deterioration and or premature wear. Rockford offers chemically treated u-joints and snap rings to meet your aluminum driveshaft needs. Our universal joints prevent the corrosion, seizing and premature wear associated with a steel replacement joint used on an aluminum application.

The Rockford “Silver Line”...

Made specifically for the value-minded customer seeking an economical alternative to OEM or superior quality aftermarket parts, the Rockford “Silver-Line” features a full range of imported universal joints. The “Silver-Line” offers reasonably priced parts that perform efficiently and effectively. These parts are perfect for older vehicles or for the price-conscious individual preparing a used automobile for sale. You simply add the letters “SL” behind any of the part numbers in this book to see if its a stock item.

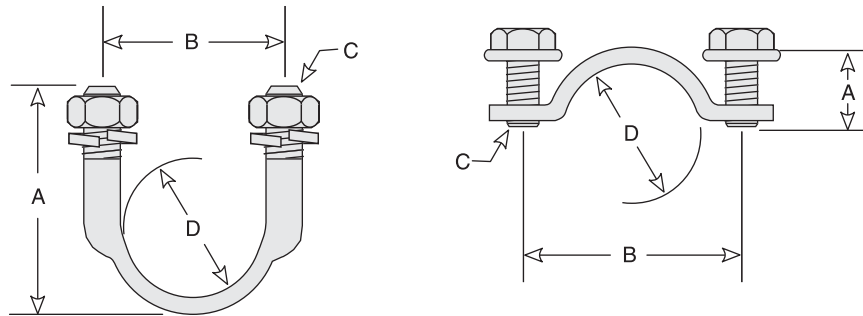
Quality Value and Service for over 60 Years



Universal Joint Features...

Standard	Heavy Duty	Fun In the Mud	Aluminum	Silver-Line	U-Joint Series
K134	K134HD	—	K134A	K134SL	1310/1330
K153	K153HD	K153-1	K467A	K153SL	1310
K160	K160HD	—	K160A	K160SL	1410
K178	K178HD	—	K447A	K178SL	1350
K212	—	—	K541A	K212SL	1330/3R
K260	K260HD	—	—	K260SL	1310WJ
K297	K297HD	K297-1	—	K297SL	1310WJ
K332	K332HD	—	—	K332SL	1480WJ
K355	—	—	K355A	—	1330/7290
K443	K443HD	K443-1	—	K443SL	1210
K456	K456HD	—	—	K456HD	1210WJ
K458	K458HD	—	—	—	1210
K544	—	—	K544A	—	1310/3R
K648	—	—	K648A	K648SL	1330/1350
K720	—	—	K720A	—	1330/7260
K1200	K1200HD	—	—	K1200SL	1310/S55
K1201	K1201HD	—	—	K1201SL	S55/FORD SP
K1203	K1203HD	K1203-1	K521A	K1203SL	1330/P55
K1204	K1204HD	—	—	K1204SL	P55/FORD SP
K1306	K1306HD	K1306-1	—	K1306SL	7260
K1309	K1309HD	—	—	K1309SL	7290
K1510	K1510HD	—	—	K1510SL	TOYOTA
K3022	—	—	K544A	K3022SL	1310/3R
K3050	—	—	K648A	—	1330/1350
K3147	K3147HD	K3147-1	K3147A	K3147SL	3R

Hardware Kit Dimensions...



U-Bolt Kits

RDL U-Bolt Kit Part Number	U-Bolts	Hex nut & Cap Screw	Lock Washers	Dim. A	Dim. B	Dim. C	Dim. D	Torque Foot Lbs.
K29418	2	4	4	1.875	1.375	1/4-28	1.000	10-14
K29428	2	4	4	1.870	1.406	5/16-24	1.063	14-17
K29458	2	4	4	1.969	1.594	5/16-18	1.125	14-17
K39418	2	4	4	2.188	1.656	3/8-24	1.188	20-24
K39428	2	4	4	2.406	1.906	7/16-20	1.375	32-37

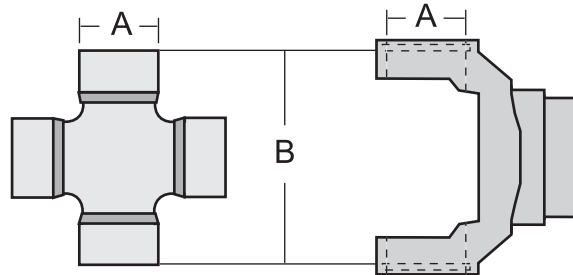
Clamp Kits

RDL Clamp Kit Part Number	Bearing Clamps	Hex nut & Cap Screw	Lock Washers	Dim. A	Dim. B	Dim. C	Dim. D	Torque Foot Lbs.
K27018	2	4	—	5/8	1.580	1/4-28	1.063	13-18
K27028	2	4	—	1 7/16	1.580	5/16-24	1.063	30-35
K27038	2	4	—	5/8	1.500	1/4-28	1.078	13-18
K27048	2	4	—	1 7/16	1.832	5/16-24	1.125	30-35
K37018	2	4	—	1 7/16	1.660	5/16-24	1.188	30-35
K37028	2	4	—	3/4	1.800	5/16-24	1.188	30-35
K37038	2	4	—	3/4	2.125	3/8-24	1.375	55-60

RDL Hardware Kit Number to Application Series

RDL U-Bolt Kit — Application Series	RDL Clamp Kit — Application Series
K29418 — 1110, 1.75R	K27018 — 1210, 1310
K29428 — 1210, 1280, 1310, 1330	K27028 — 1310, 1330
K29458 — S55, P55, 3R	K27038 — 7260
K39418 — 1350, 1410, O55, R55	K27048 — 3R
K39428 — 1480, 1550	K37018 — 1350, 1410
	K37028 — 1350, 1410, O55, R55
	K37038 — 1480, 1550, SPL55, SPL70

Outside Lock-Up/Snap Ring (Sorted by Bearing Diameter)

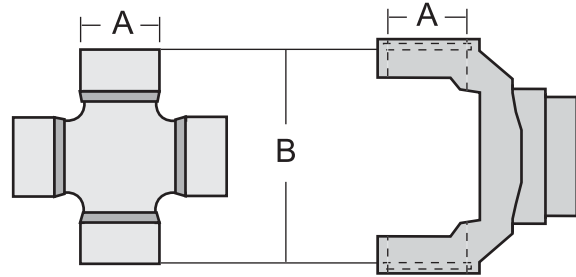


Rockford Part No.	Bearing Diameter	Outside Lock-Up	Lube Fitting	Kit Type
	A	B		
K1500	0.788	2.236	E	SPICER 1000
K0853	0.875	2.910	D	ROCKWELL 1FR
K111	0.938	2.407	C	SPICER 1100
K1503	0.985	2.498	E	FOREIGN
K1516	0.985	3.005	A	FOREIGN
K0856	1.005	3.910	D	ROCKWELL 3DR
K0408*	1.024	2.756	C	SUZUKI GRAND VITARA, XL-7
K443	1.063	2.437	E	SPICER 1210
K443-1	1.063	2.437	C	SPICER 1210
K443HD	1.063	2.437	C	SPICER 1210-HD
K458	1.063	2.437	E	SPICER 1210
K458HD	1.063	2.437	C	SPICER 1210-HD
KR200*	1.063	2.646	E	EQUINOX/VUE
K4	1.063	2.931	A	LAND ROVER, VOLVO, JAGUAR
KR201*	1.063	3.145	A	HYUNDAI SANTA FE
K153	1.063	3.217	A	SPICER 1310
K153-1	1.063	3.217	C	SPICER 1310
K153HD	1.063	3.217	E	SPICER 1310-HD
K278	1.063	3.217	A	SPICER 1310-CV
K467A	1.063	3.217	A	SPICER 1310-ALUM
K1200	1.063	3.217	A	S55 CLEVELAND
K1200HD	1.063	3.217	E	S55 CLEVELAND
K521A	1.063	3.217	A	SPICER 1330-ALUM
K1203	1.063	3.622	A	P55 CLEVELAND
K1203-1	1.063	3.622	C	P55 CLEVELAND

A- 1 LUBE FITTING IN CROSS -STRAIGHT
 B- 2 LUBE FITTINGS IN CROSS
 C- 1 LUBE FITTING IN BEARING
 D- 1 LUBE FITTING IN CROSS -ANGLED
 E- NO LUBE FITTING

***NEW ADDITION TO CATALOG**

Outside Lock-Up/Snap Ring (Sorted by Bearing Diameter)

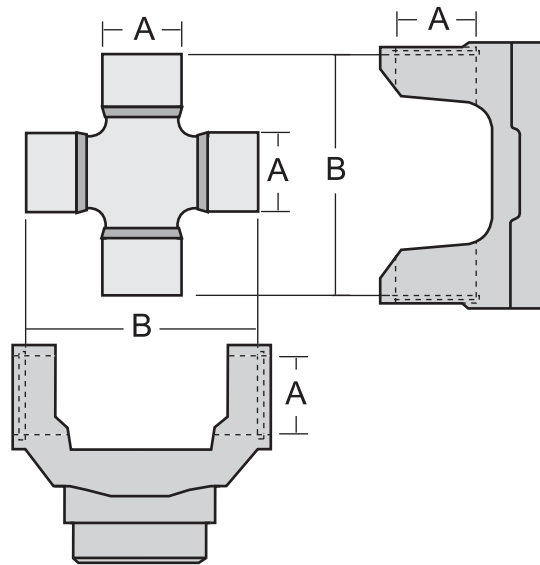


Rockford Part No.	Bearing Diameter	Outside Lock-Up	Lube Fitting	Kit Type
	A	B		
K1203HD	1.063	3.622	E	P55 CLEVELAND-HD
K2540*	1.065	3.198	A	TOYOTA (KOYO)
K1509	1.123	3.076	A	FOREIGN
K129	1.127	2.626	D	P.T.O
K0451	1.181	3.268	E	ZF
K178	1.188	3.622	A	SPICER 1350
K178HD	1.188	3.622	E	SPICER 1350-HD
K447A	1.188	3.622	A	SPICER 1350-ALUM
K447AHD	1.188	3.622	E	SPICER 1350-ALUM HD
K1205	1.188	3.622	A	R55 CLEVELAND
K160	1.188	4.182	A	SPICER 1410
K160A	1.188	4.182	A	SPICER 1410-ALUM
K160HD	1.188	4.182	A	SPICER 1410-HD
K1206	1.188	4.182	A	055 CLEVELAND
K0471	1.188	4.187	A	SPICER 1410
K243	1.251	3.205	C	L35N ROCKWELL
K1485*	1.374	4.114	E	AAM 1485 SERIES
K0818	1.375	3.701	D	BONDIOLI 7
K188	1.375	4.182	A	SPICER 1480 & P.T.O.
K155	1.375	4.966	A	SPICER 1500/1550
K0819	1.615	4.252	D	BONDIOLI 9
K0820	1.615	4.646	D	BONDIOLI 10
K0898	1.625	5.064	D	ROCKWELL 750N
K0899	1.938	5.934	D	ROCKWELL 850N
K0932	2.186	8.092	A	SPICER 1850

A-1 LUBE FITTING IN CROSS -STRAIGHT
 B-2 LUBE FITTINGS IN CROSS
 C-1 LUBE FITTING IN BEARING
 D-1 LUBE FITTING IN CROSS -ANGLED
 E-NO LUBE FITTING

***NEW ADDITION TO CATALOG**

Outside Lock-Up/Snap Ring Combination Kits (Sorted by Bearing Diameter)

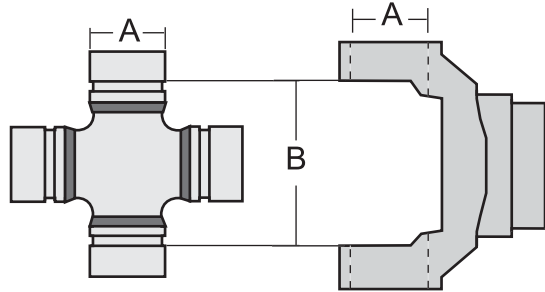


Rockford Part No.	Bearing Diameter	Snap Ring Dimensions	Lube Fitting	Kit Type
	A	B		
K134	1.063	3.217	A	SPICER 1310
	1.063	3.622	A	SPICER 1330
K134A	1.063	3.217	A	SPICER 1310-ALUM
	1.063	3.622	A	SPICER 1330-ALUM
K134HD	1.063	3.219	E	SPICER 1310-HD
	1.063	3.622	E	SPICER 1330-HD
K1201	1.063	3.217	A	SPICER 1310
	1.125	3.217	A	CLEVELAND S55
K1201HD	1.063	3.217	E	SPICER 1310-HD
	1.125	3.217	E	CLEVELAND S55-HD
K1204	1.063	3.622	A	SPICER 1330
	1.125	3.622	A	CLEVELAND P55
K1204HD	1.063	3.622	E	SPICER 1330-HD
	1.125	3.622	E	CLEVELAND P55-HD
K460	1.063	3.217	E	SPICER 1310
	1.188	3.622	E	SPICER 1350
K648	1.063	3.622	A	SPICER 1330
	1.188	3.622	A	SPICER 1350
K648A	1.063	3.622	A	SPICER 1330-ALUM
	1.188	3.622	A	SPICER 1350-ALUM
K3050	1.063	3.622	A	SPICER 1330
	1.188	3.622	A	SPICER 1350
K1435*	1.188	3.622	E	SPICER 1350
	1.188	4.182	E	SPICER 1410

A- 1 LUBE FITTING IN CROSS -STRAIGHT
 B- 2 LUBE FITTINGS IN CROSS
 C- 1 LUBE FITTING IN BEARING
 D- 1 LUBE FITTING IN CROSS -ANGLED
 E- NO LUBE FITTING

***NEW ADDITION TO CATALOG**

Inside Lock-Up/Snap Ring (Sorted by Bearing Diameter)

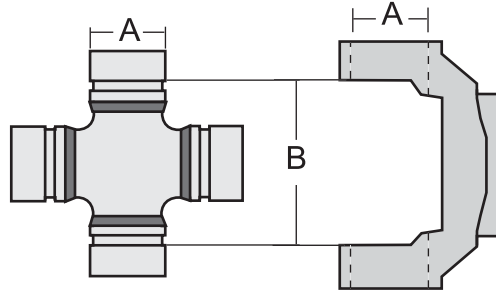


Rockford Part No.	Bearing Diameter	Snap Ring Dimensions	Lube Fitting	Kit Type
	A	B		
K1500	0.788	1.495	E	FOREIGN
430-9	0.791	1.285	C	STAKED-IN REPLACEMENT
430-9A*	0.791	1.315	C	STAKED-IN REPLACEMENT
430-9B*	0.791	1.335	C	STAKED-IN REPLACEMENT
430-10	0.867	1.400	C	STAKED-IN REPLACEMENT
430-10A	0.867	1.515	C	STAKED-IN REPLACEMENT
430-10C*	0.867	1.670	C	STAKED-IN REPLACEMENT
430-10B	0.867	1.725	C	STAKED-IN REPLACEMENT
K1514	0.887	1.481	E	FOREIGN
K170	0.938	1.495	D	SPICER 1000
K170-1	0.938	1.495	C	SPICER 1000
430-11A	0.947	1.641	C	STAKED-IN REPLACEMENT
430-11	0.947	1.900	C	STAKED-IN REPLACEMENT
K92	0.970	1.445	D	ROCKWELL L6N
430-12	0.972	1.641	C	STAKED-IN REPLACEMENT
K1504	0.985	1.717	E	FOREIGN
K1501	0.985	1.732	E	FOREIGN
K105	1.000	1.715	D	SPICER 1100/1110
K2011	1.000	2.339	A	MECHANICS 2RL
K1502	1.024	1.844	E	FOREIGN
K1508	1.024	2.208	A	FOREIGN
KR101*	1.044	1.988	C	KIA SORENTO
K1513	1.044	1.996	E	FOREIGN
K456	1.063	1.635	C	SPICER 1210WJ
K456HD	1.063	1.635	E	SPICER 1210WJ-HD

***NEW ADDITION TO CATALOG**

A-1 LUBE FITTING IN CROSS -STRAIGHT
 B-2 LUBE FITTINGS IN CROSS
 C-1 LUBE FITTING IN BEARING
 D-1 LUBE FITTING IN CROSS -ANGLED
 E-NO LUBE FITTING

Inside Lock-Up/Snap Ring (Sorted by Bearing Diameter)

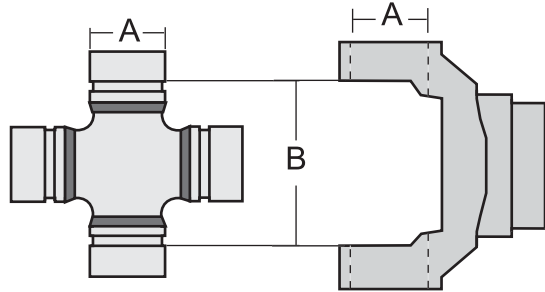


Rockford Part No.	Bearing Diameter	Snap Ring Dimensions		Lube Fitting	Kit Type
		A	B		
430-14*	1.063	1.780		A	STAKED-IN REPLACEMENT
K449	1.063	1.930		E	NISSAN
K260	1.063	2.184		C	SPICER 1210WJ
K260HD	1.063	2.184		E	SPICER 1210WJ-HD
K350	1.063	2.342		A	SPICER 1310
K1200	1.063	2.362		A	SPICER 1310/S55 CLEVELAND
K1200HD	1.063	2.362		E	SPICER 1310/S55 - HD
K1203	1.063	2.767		A	SPICER 1330/P55
K1203-1	1.063	2.767		C	SPICER 1330/P55
K1203HD	1.063	2.767		E	SPICER 1330/P55 HVYDTY
K242	1.065	1.816		D	ROCKWELL L12N
K1306	1.078	2.121		A	DETROIT 7260
K1306-1	1.078	2.121		C	DETROIT 7260
K1306HD	1.078	2.121		E	DETROIT 7260-HD
430-12A	1.098	1.995		C	STAKED-IN REPLACEMENT
KR100*	1.103	2.021			KIA SORENTO
K1505	1.103	2.205		A	NISSAN
K1507	1.103	2.323		A	FOREIGN
K2532	1.125	2.119		C	MECHANICS 2.5R
K3011	1.125	2.556		A	MECHANICS 3R
K3147	1.125	2.556		A	MECHANICS 3R
K3147-1	1.125	2.556		C	MECHANICS 3R
K3147A	1.125	2.556		A	MECHANICS 3R-ALUM
K3147HD	1.125	2.556		E	MECHANICS 3R-HD
K4015	1.125	3.244		A	MECHANICS 4R

A- 1 LUBE FITTING IN CROSS -STRAIGHT
 B- 2 LUBE FITTINGS IN CROSS
 C- 1 LUBE FITTING IN BEARING
 D- 1 LUBE FITTING IN CROSS -ANGLED
 E- NO LUBE FITTING

***NEW ADDITION TO CATALOG**

Inside Lock-Up/Snap Ring (Sorted by Bearing Diameter)



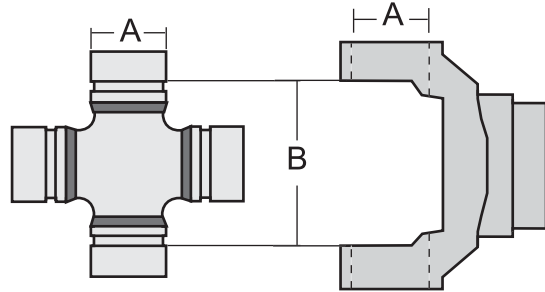
Rockford Part No.	Bearing Diameter	Snap Ring Dimensions	Lube Fitting	Kit Type
	A	B		
K1309	1.126	2.620	A	DETROIT 7290
K1309HD	1.126	2.620	E	DETROIT 7290-HD
K1510	1.143	2.049	A	TOYOTA
K1510HD	1.143	2.049	E	TOYOTA HD
K1515	1.143	2.089	A	FOREIGN
K0411	1.143	2.835	C	ACURA SLX/ISUZU
K0450	1.181	2.290	D	MONTERO SPORT
K0412*	1.181	2.993	D	MONTERO MT
K297	1.188	2.187	A	SPICER 1310WJ
K297-1	1.188	2.187	C	SPICER 1310WJ
K297HD	1.188	2.187	E	SPICER 1310WJ-HD
KR104*	1.188	2.405	E	1350WJ/SPL30WJ JEEP
K1205	1.188	2.556	A	CLEVELAND R55
K1206	1.188	3.118	A	CLEVELAND 055
K0545	1.125	3.250	A	MECHANICS 4R
K1300	1.231	1.999	D	DETROIT 5160
K1301	1.231	2.997	A	DETROIT 5380
KR102*	1.260	2.362	D	KIA SORENTO
K1511	1.261	2.520	A	FOREIGN
505-10	1.313	3.313	A	MECHANICS 5R
K0567	1.313	4.313	A	MECHANICS 6R
K1485*	1.374	2.919	E	AAM 1485
K332	1.375	2.995	A	SPICER 1480WJ
K332HD	1.375	2.995	A	SPICER 1480WJ-HD
KR105*	1.375	3.702	E	AAM1555WJ DODGE

A-1 LUBE FITTING IN CROSS -STRAIGHT
 B-2 LUBE FITTINGS IN CROSS
 C-1 LUBE FITTING IN BEARING
 D-1 LUBE FITTING IN CROSS -ANGLED
 E-NO LUBE FITTING

***NEW ADDITION TO CATALOG**



Inside Lock-Up/Snap Ring (Sorted by Bearing Diameter)

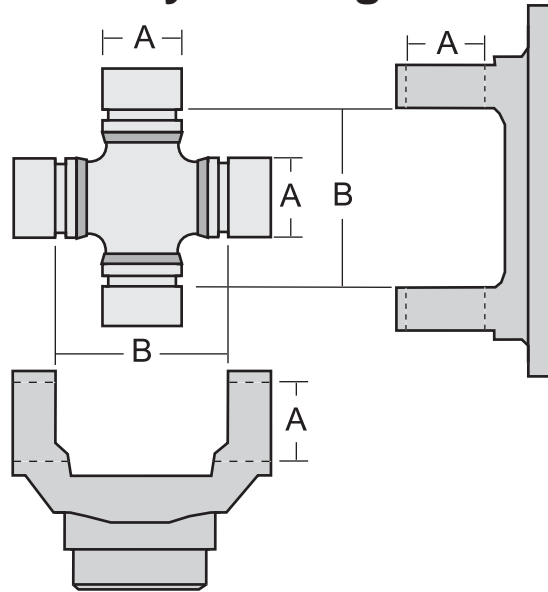


Rockford Part No.	Bearing Diameter	Snap Ring Dimensions	Lube Fitting	Kit Type
	A	B		
KR103*	1.375	3.780	A	1550WJ/SPL70WJ FORD
507-10	1.626	4.363	A	MECHANICS 7R

- A- 1 LUBE FITTING IN CROSS -STRAIGHT
- B- 2 LUBE FITTINGS IN CROSS
- C- 1 LUBE FITTING IN BEARING
- D- 1 LUBE FITTING IN CROSS -ANGLED
- E- NO LUBE FITTING

***NEW ADDITION TO CATALOG**

Inside Lock-Up/Snap Ring Combination Kits (Sorted by Bearing Diameter)

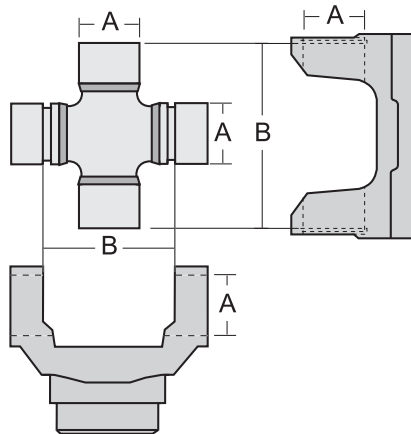


Rockford Part No.	Bearing Diameter	Snap Ring Dimensions	Lube Fitting	Kit Type
	A	B		
K0840	0.938	1.500	D	SPICER 1000
	0.969	1.444	D	ROCKWELL L6N
K544	1.063	2.362	A	CLEVELAND S55
	1.125	2.556	A	MECHANICS 3R
K544A	1.063	2.362	A	CLEVELAND S55-ALUM
	1.125	2.556	A	MECHANICS 3R-ALUM
K3022	1.063	2.362	E	CLEVELAND S55
	1.125	2.556	E	MECHANICS 3R
K354	1.063	2.362	E	CLEVELAND S55
	1.126	2.620	E	DETROIT 7290
K355	1.063	2.767	A	CLEVELAND P55
	1.126	2.620	A	DETROIT 7290
K355A	1.063	2.767	A	CLEVELAND P55-ALUM
	1.126	2.620	A	DETROIT 7290-ALUM
K527	1.078	2.125	A	DETROIT 7260
	1.126	2.620	A	DETROIT 7290
K2173	1.000	2.339	A	MECHANICS 2R
	1.125	2.339	A	MECHANICS 2R
K3163	1.125	2.556	A	MECHANICS 3R
	1.126	2.622	A	DETROIT 7290

A-1 LUBE FITTING IN CROSS -STRAIGHT
 B-2 LUBE FITTINGS IN CROSS
 C-1 LUBE FITTING IN BEARING
 D-1 LUBE FITTING IN CROSS -ANGLED
 E-NO LUBE FITTING



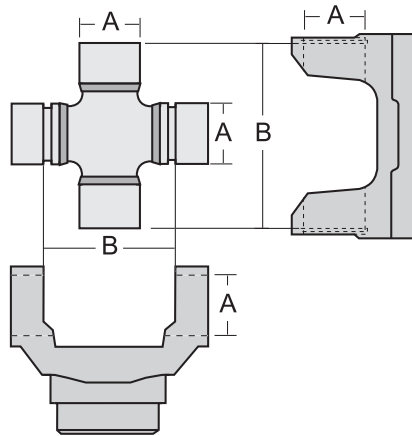
Inside & Outside Snap Ring Combination Kits (Sorted by Bearing Diameter)



Rockford Part No.	Bearing Diameter	Snap Ring Dimensions	Lube Fitting	Inside / Outside	Kit Type
	A	B			
K1500	.788	1.495	E	INSIDE	FOREIGN
	.788	2.236	E	OUTSIDE	FOREIGN
K248	1.000	1.715	A	INSIDE	SPICER 1110
	1.063	2.437	A	OUTSIDE	SPICER 1210
K2140	1.000	2.339	A	INSIDE	MECHANICS 2R
	1.063	3.217	A	OUTSIDE	SPICER 1310
K456	1.063	1.635	C	INSIDE	FORD SPECIAL
	1.063	2.437	C	OUTSIDE	SPICER 1210
K529	1.063	2.188	A	INSIDE	SPICER 1310WJ
	1.063	3.217	A	OUTSIDE	SPICER 1310
K1200	1.063	2.362	A	INSIDE	CLEVELAND S55
	1.063	3.217	A	OUTSIDE	SPICER 1310
K1200HD	1.063	2.362	E	INSIDE	CLEVELAND S55-HD
	1.063	3.217	E	OUTSIDE	SPICER 1310-HD
K1203	1.063	2.767	A	INSIDE	CLEVELAND P55
	1.063	3.622	A	OUTSIDE	SPICER 1330
K1203-1	1.063	2.767	C	INSIDE	CLEVELAND P55
	1.063	3.622	C	OUTSIDE	SPICER 1330
K1203HD	1.063	2.767	E	INSIDE	CLEVELAND P55-HD
	1.063	3.622	E	OUTSIDE	SPICER 1330-HD
K353	1.063	3.217	A	OUTSIDE	SPICER 1310
	1.078	2.121	A	INSIDE	DETROIT 7260
K720	1.063	3.622	A	OUTSIDE	SPICER 1330
	1.078	2.121	A	INSIDE	DETROIT 7260
K720A	1.063	3.622	A	OUTSIDE	SPICER 1330-ALUM
	1.078	2.121	A	INSIDE	DETROIT 7260-ALUM
K1201	1.063	2.362	A	INSIDE	CLEVELAND S55
	1.125	3.217	A	OUTSIDE	FORD SPECIAL
K1201HD	1.063	2.362	E	INSIDE	CLEVELAND S55-HD
	1.125	3.217	E	OUTSIDE	FORD SPECIAL-HD

A- 1 LUBE FITTING IN CROSS -STRAIGHT
 B- 2 LUBE FITTINGS IN CROSS
 C- 1 LUBE FITTING IN BEARING
 D- 1 LUBE FITTING IN CROSS -ANGLED
 E- NO LUBE FITTING

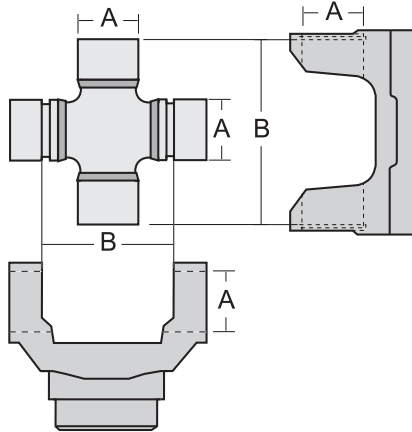
Inside & Outside Snap Ring Combination Kits (Sorted by Bearing Diameter)



Rockford Part No.	Bearing Diameter	Snap Ring Dimensions	Lube Fitting	Inside / Outside	Kit Type
	A	B			
K2530	1.063	3.217	A	OUTSIDE	SPICER 1310
	1.125	2.119	A	INSIDE	MECHANICS 2.5R
K3022	1.063	3.217	A	OUTSIDE	SPICER 1310
	1.125	2.556	A	INSIDE	MECHANICS 3R
K544	1.063	3.217	A	OUTSIDE	SPICER 1310
	1.125	2.556	A	INSIDE	MECHANICS 3R
K544A	1.063	3.217	A	OUTSIDE	SPICER 1310-ALUM
	1.125	2.556	A	INSIDE	MECHANICS 3R-ALUM
K212	1.063	3.622	A	OUTSIDE	SPICER 1330
	1.125	2.566	A	INSIDE	MECHANICS 3R
K541A	1.063	3.622	A	OUTSIDE	SPICER 1330-ALUM
	1.125	2.556	A	INSIDE	MECHANICS 3R-ALUM
K355	1.063	3.622	A	OUTSIDE	SPICER 1330
	1.126	2.622	A	INSIDE	DETROIT 7290
K355A	1.063	3.622	A	OUTSIDE	SPICER 1330-ALUM
	1.126	2.622	A	INSIDE	DETROIT 7290-ALUM
K1204	1.063	2.767	A	INSIDE	CLEVELAND P55
	1.125	3.622	A	OUTSIDE	FORD SPECIAL
K1204HD	1.063	2.767	A	INSIDE	CLEVELAND P55-HD
	1.125	3.622	A	OUTSIDE	FORD SPECIAL-HD
K354	1.063	3.217	A	OUTSIDE	SPICER 1310
	1.126	2.620	A	INSIDE	DETROIT 7290
K721	1.063	3.217	A	OUTSIDE	SPICER 1310
	1.143	2.078	A	INSIDE	TOYOTA
K648	1.063	2.767	A	INSIDE	CLEVELAND P55
	1.188	3.622	A	OUTSIDE	SPICER 1350
K648A	1.063	2.767	A	INSIDE	CLEVELAND P55-ALUM
	1.188	3.622	A	OUTSIDE	SPICER 1350-ALUM
K1312	1.125	2.556	A	INSIDE	MECHANICS 3R
	1.125	3.622	A	OUTSIDE	FORD YOKE

A-1 LUBE FITTING IN CROSS -STRAIGHT
 B-2 LUBE FITTINGS IN CROSS
 C-1 LUBE FITTING IN BEARING
 D-1 LUBE FITTING IN CROSS -ANGLED
 E-NO LUBE FITTING

Inside & Outside Snap Ring Combination Kits (Sorted by Bearing Diameter)

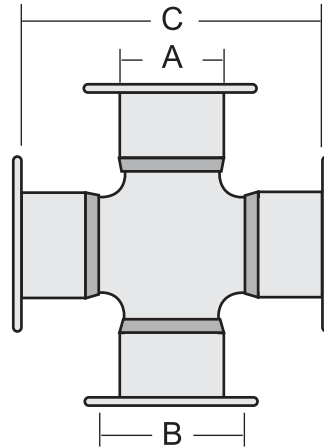


Rockford Part No.	Bearing Diameter	Snap Ring Dimensions	Lube Fitting	Inside / Outside	Kit Type
	A	B			
K3162	1.125	2.556	A	INSIDE	MECHANICS 3R
	1.188	3.622	A	OUTSIDE	SPICER 1350
K1313	1.125	2.767	A	INSIDE	FORD SPECIAL
	1.188	3.622	A	OUTSIDE	SPICER 1350
K1205	1.188	2.556	A	INSIDE	CLEVELAND R55
	1.188	3.622	A	OUTSIDE	SPICER 1350
K1206	1.188	3.118	A	INSIDE	CLEVELAND 055
	1.188	4.182	A	OUTSIDE	SPICER 1410
K357	1.188	4.182	A	OUTSIDE	SPICER 1410
	1.231	2.997	A	INSIDE	DETROIT 5380

A- 1 LUBE FITTING IN CROSS -STRAIGHT
 B- 2 LUBE FITTINGS IN CROSS
 C- 1 LUBE FITTING IN BEARING
 D- 1 LUBE FITTING IN CROSS -ANGLED
 E- NO LUBE FITTING

Round Bearing W/Back Plate Type Kits

(Sorted by Bearing Diameter)

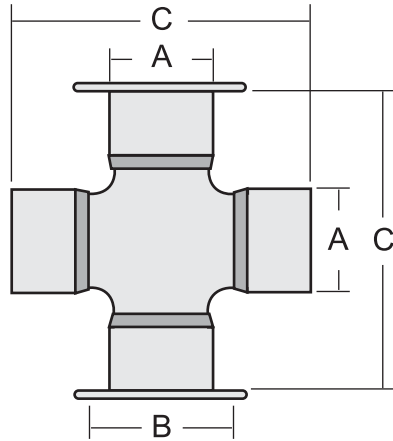


Rockford Part No.	Bearing Diameter A	Plate Dim. B	Inside Lock-Up C	Lube Fitting	Kit Type
K115	1.562	1.995	4.562	A	SPICER 1500
K279	1.875	2.312	5.310	A	SPICER 1600, 1610
K280	1.937	2.437	6.092	A	SPICER 1700, 1710
K407	1.937	2.437	7.000	B	SPICER 1760
K281	1.937	2.437	7.554	A	SPICER 1810
K308	2.186	2.812	8.094	A	SPICER 1880
K124	2.322	2.812	6.593	B	SPICER 1800

A-1 LUBE FITTING IN CROSS -STRAIGHT
 B-2 LUBE FITTINGS IN CROSS
 C-1 LUBE FITTING IN BEARING
 D-1 LUBE FITTING IN CROSS -ANGLED
 E-NO LUBE FITTING



Half Round Type Kits Combination Round & Round w/Back Plate (Sorted by Bearing Diameter)



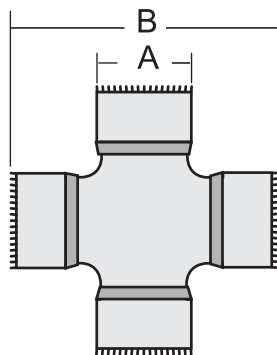
Rockford Part No.	Bearing Diameter A	Plate Dim. B	Lock up Dim. C	Lube Fitting	Kit Type
K438	1.875	5.312	5.312	B	SPICER 1610
K674*	1.875	5.312	5.312	A	SPICER 1610
K515	1.937	6.094	6.187	B	SPICER 1710
K675*	1.937	6.094	6.187	A	SPICER 1710
K469	1.937	7.000	7.093	B	SPICER 1760
K677*	1.937	7.000	7.093	A	SPICER 1760
K510	1.937	7.547	7.640	B	SPICER 1810
K676*	1.937	7.547	7.640	A	SPICER 1810

* These kits include a strap kit.

A- 1 LUBE FITTING IN CROSS -STRAIGHT
 B- 2 LUBE FITTINGS IN CROSS
 C- 1 LUBE FITTING IN BEARING
 D- 1 LUBE FITTING IN CROSS -ANGLED
 E- NO LUBE FITTING

Knurled Type Kits

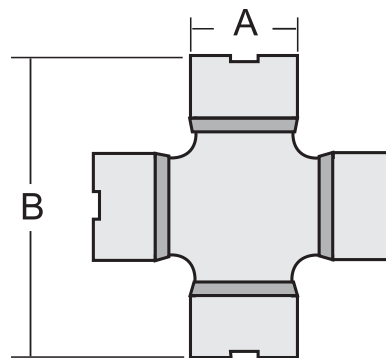
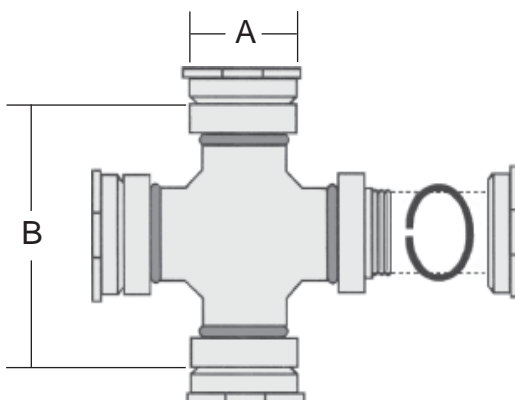
(Sorted by Bearing Diameter)



Rockford Part No.	Bearing Diameter A	Lock-Up Dimensions B	Lube Fitting	Kit Type
K1214	1.375	4.182	A	D56 CLEVELAND
K1210	1.375	4.966	A	U56 CLEVELAND

Slotted and Threaded Round Type Kits

(Sorted by Bearing Diameter)

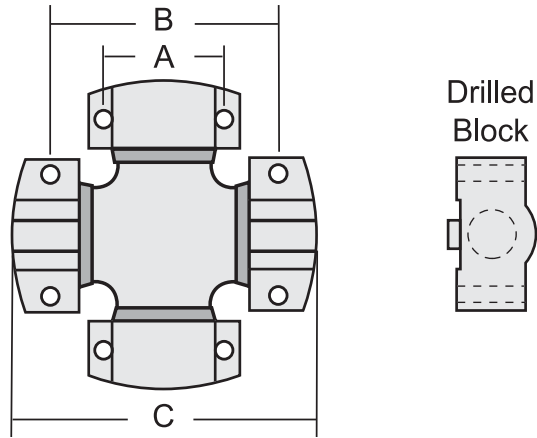


Rockford Part No.	Bearing Diameter A	Lock-Up Dimensions B	Lube Fitting	Bearing Type	Kit Type
K3031	1.125	2.943	A	THREADED	UN-MACHINED 3R
K0890	1.250	4.063	D	SLOTTED	ROCKWELL 4N

A-1 LUBE FITTING IN CROSS -STRAIGHT
 B-2 LUBE FITTINGS IN CROSS
 C-1 LUBE FITTING IN BEARING
 D-1 LUBE FITTING IN CROSS -ANGLED
 E-NO LUBE FITTING



Block Bearing Type Kits (Sorted by Bearing Diameter)

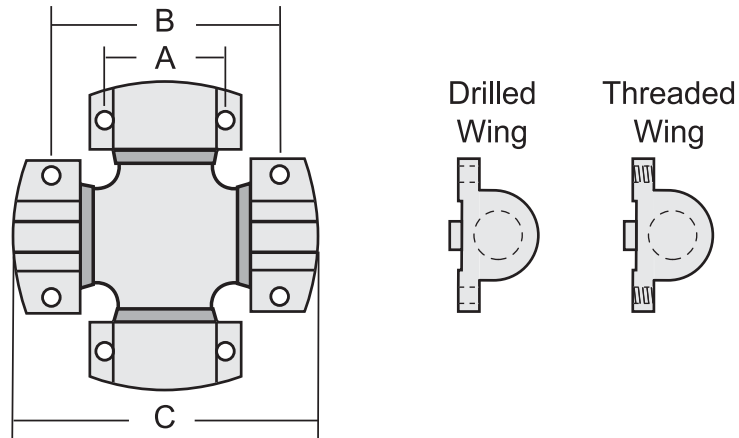


Rockford Part No.	Center to Center Bearing A	Center to Center Joint B	Overall Across Joint C	Lube Fitting	Bearing Qty. & Type	Kit Type
K0967	1.440	2.340	3.810	C	4 BLOCKS (DRILLED)	MECHANICS 3C
K6106	1.687	4.500	5.527	A	4 BLOCKS (DRILLED)	MECHANICS 6C
506-10	1.687	4.500	5.527	A	2 BLOCKS (DRILLED)	MECHANICS 6C
	1.687	4.500	5.527	A	2 BLOCKS (DOUBLE KEYED)	MECHANICS 6C
506-11	1.687	4.500	5.527	D	2 BLOCKS (DRILLED)	MECHANICS 6C
	1.687	4.500	5.527	D	2 BLOCKS (DOUBLE KEYED)	MECHANICS 6C
K0486	1.930	4.100	5.700	A	4 BLOCKS (DRILLED)	SIGE
K7105	1.937	4.625	5.840	A	4 BLOCKS (DRILLED)	MECHANICS 7C
K8105	1.937	6.875	8.121	A	4 BLOCKS (DRILLED)	MECHANICS 8C
K9001	2.812	6.625	8.247	A	4 BLOCKS (DRILLED)	MECHANICS 9C
K0485	3.620	6.500	8.880	A	4 BLOCKS (DRILLED)	MECHANICS 10C

A- 1 LUBE FITTING IN CROSS -STRAIGHT
 B- 2 LUBE FITTINGS IN CROSS
 C- 1 LUBE FITTING IN BEARING
 D- 1 LUBE FITTING IN CROSS -ANGLED
 E- NO LUBE FITTING

Wing Bearing Type Kits

(Sorted by Bearing Diameter)

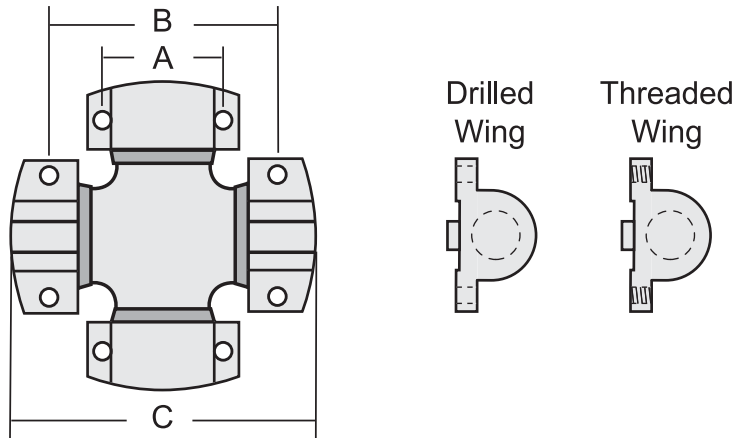


Rockford Part No.	Center to Center Bearing A	Center to Center Joint B	Overall Across Joint C	Lube Fitting	Bearing Qty. & Type	Kit Type
K0535	1.440	2.750	3.810	A	2 WINGS (DRILLED)	MECHANICS 3C
	1.440	2.750	3.810	A	2 WINGS (THREADED)	MECHANICS 3C
K4002	1.437	3.438	4.248	A	4 WINGS (THREADED)	MECHANICS 4C
K5000	1.687	3.500	4.527	A	4 WINGS (THREADED)	MECHANICS 5C
K6000	1.687	4.500	5.527	A	4 WINGS (THREADED)	MECHANICS 6C
K6108	1.687	4.500	5.527	A	2 WINGS (THREADED)	MECHANICS 6C
	1.937	4.625	5.840	A	2 WINGS (THREADED)	MECHANICS 7C
K0566	1.687	4.500	5.527	A	2 WINGS (DRILLED)	MECHANICS 6C
	1.937	4.625	5.840	A	2 WINGS (DRILLED)	MECHANICS 7C
K5801	1.937	4.250	5.311	A	4 WINGS (THREADED)	58WB ROCKWELL
K7000	1.937	4.625	5.840	A	4 WINGS (THREADED)	MECHANICS 7C
K7206	1.937	4.625	5.840	A	2 WINGS (THREADED)	MECHANICS 7C
	1.937	4.625	5.840	A	2 WINGS (DRILLED)	MECHANICS 7C
K8200	1.937	6.875	8.121	A	4 WINGS (THREADED)	MECHANICS 8C
K8208	1.937	6.875	8.121	A	4 WINGS (DRILLED)	MECHANICS 8C

A-1 LUBE FITTING IN CROSS -STRAIGHT
 B-2 LUBE FITTINGS IN CROSS
 C-1 LUBE FITTING IN BEARING
 D-1 LUBE FITTING IN CROSS -ANGLED
 E-NO LUBE FITTING



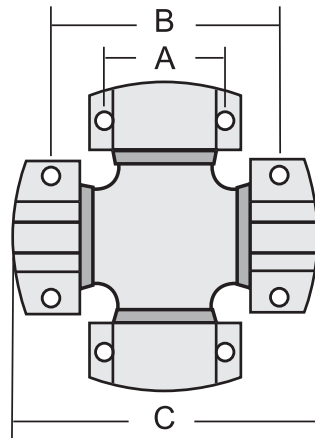
Wing Bearing Type Kits (Sorted by Bearing Diameter)



Rockford Part No.	Center to Center Bearing A	Center to Center Joint B	Overall Across Joint C	Lube Fitting	Bearing Qty. & Type	Kit Type
K8201	1.937	6.875	8.121	A	2 WINGS (THREADED)	MECHANICS 8C
	1.937	6.875	8.121	A	2 WINGS (DRILLED)	MECHANICS 8C
K9000	2.812	6.625	8.247	A	4 WINGS (THREADED)	MECHANICS 9C
K0487	3.620	6.500	8.880	A	4 WINGS (DRILLED)	MECHANICS 10C

A- 1 LUBE FITTING IN CROSS -STRAIGHT
 B- 2 LUBE FITTINGS IN CROSS
 C- 1 LUBE FITTING IN BEARING
 D- 1 LUBE FITTING IN CROSS -ANGLED
 E- NO LUBE FITTING

Block & Wing Combination Type Kits (Sorted by Bearing Diameter)



Drilled
Block



Threaded
Block



Drilled
Wing




Threaded
Wing



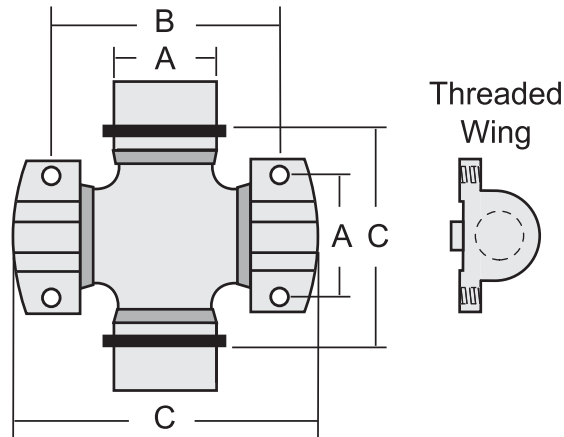
Rockford Part No.	Center to Center Bearing A	Center to Center Joint B	Overall Across Joint C	Lube Fitting	Bearing Qty. & Type	Kit Type
K0966	1.440	2.750	3.810	C	2 BLOCKS (DRILLED)	MECHANICS 3C
	1.440	2.750	3.810	C	2 WINGS (THREADED)	MECHANICS 3C
K5802	1.937	4.250	5.311	A	2 BLOCKS (DRILLED)	58WB ROCKWELL
	1.937	4.250	5.311	A	2 WINGS (THREADED)	58WB ROCKWELL
K6102	1.687	4.500	5.527	A	2 BLOCKS (DRILLED)	MECHANICS 6C
	1.687	4.500	5.527	A	2 WINGS (THREADED)	MECHANICS 6C
K6109	1.687	4.500	5.527	A	2 WINGS (THREADED)	MECHANICS 6C
	1.937	4.625	5.840	A	2 BLOCKS (DRILLED)	MECHANICS 7C
K7202	1.937	4.625	5.840	A	2 BLOCKS (DRILLED)	MECHANICS 7C
	1.937	4.625	5.840	A	2 WINGS (THREADED)	MECHANICS 7C
K8202	1.937	6.875	8.121	A	2 BLOCKS (DRILLED)	MECHANICS 8C
	1.937	6.875	8.121	A	2 WINGS (THREADED)	MECHANICS 8C
K0950	2.810	4.880	6.880	A	2 BLOCKS (DRILLED)	MECHANICS 8.5C
	2.810	4.880	6.880	A	2 WINGS (THREADED)	85WB ROCKWELL

A-1 LUBE FITTING IN CROSS -STRAIGHT
 B-2 LUBE FITTINGS IN CROSS
 C-1 LUBE FITTING IN BEARING
 D-1 LUBE FITTING IN CROSS -ANGLED
 E-NO LUBE FITTING

ROCKFORD 

Combination Wing Bearing & Round Bearing Type Kits

(Sorted by Bearing Diameter)



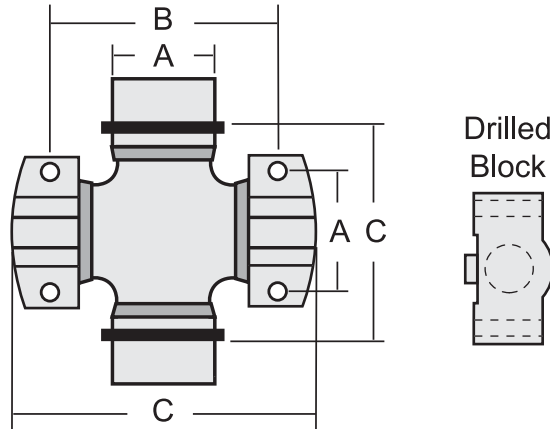
Rockford Part No.	Bearing Diam.	Joint Dim.	Joint Dim.	Lube Fitting	Bearing Qty. & Type	Kit Type
	A	B	C			
K2031	1.000		2.339	A	2 ROUND (W/GROOVES)	MECHANICS 2R
	1.312	2.344	3.123	A	2 WINGS (TAPPED)	MECHANICS 2C
K0546	1.125		3.244	A	2 ROUND (W/GROOVES)	MECHANICS 4R
	1.437	3.438	4.248	A	2 WINGS (DRILLED)	MECHANICS 4C
K4014	1.125		3.244	A	2 ROUND (W/GROOVES)	MECHANICS 4R
	1.437	3.438	4.248	A	2 WINGS (TAPPED)	MECHANICS 4C
K5008	1.313		3.309	A	2 ROUND (W/GROOVES)	MECHANICS 5R
	1.687	3.500	4.527	A	2 WINGS (TAPPED)	MECHANICS 5C
K0957	1.313		4.313		2 ROUND (W/GROOVES)	MECHANICS 6R
	1.687	4.500	5.527		2 WINGS (THREADED)	MECHANICS 6C

A- 1 LUBE FITTING IN CROSS -STRAIGHT
 B- 2 LUBE FITTINGS IN CROSS
 C- 1 LUBE FITTING IN BEARING
 D- 1 LUBE FITTING IN CROSS -ANGLED
 E- NO LUBE FITTING

Combination Block Bearing & Round Bearing Type Kits



(Sorted by Bearing Diameter)



Rockford Part No.	Bearing Diam.	Joint Dim.	Joint Dim.	Lube Fitting	Bearing Qty. & Type	Kit Type
	A	B	C			
K0998	1.125		2.556	A	2 ROUND (W/GROOVES)	MECHANICS 3R
	1.440	2.750	3.810	A	2 BLOCKS (DRILLED)	MECHANICS 3C
K0565	1.313		4.313	A	2 ROUND (W/GROOVES)	MECHANICS 6R
	1.687	4.500	5.527	A	2 BLOCKS (DRILLED)	MECHANICS 6C
K0483	1.626		4.363	A	2 ROUND (W/GROOVES)	MECHANICS 7R
	1.937	4.625	5.840	A	2 BLOCKS (DRILLED)	MECHANICS 7C
K0931	1.625		6.613	A	2 ROUND (W/GROOVES)	MECHANICS 8R
	1.937	6.875	8.121	A	2 BLOCKS (DRILLED)	MECHANICS 8C

A-1 LUBE FITTING IN CROSS -STRAIGHT
 B-2 LUBE FITTINGS IN CROSS
 C-1 LUBE FITTING IN BEARING
 D-1 LUBE FITTING IN CROSS -ANGLED
 E-NO LUBE FITTING

Speciality “STAKED-IN” Universal Joints...

For over forty years automakers have decreased assembly time and cut production cost by crimping universal joints into the driveline assemblies. According to the manufacturer the joints are “STAKED-IN” and non-replaceable.

430-9

Datsun 1200	1971-73
Datsun B210.....	1974-82
Subaru Justy.....	1989-94

430-9A

Honda CRV	2002-06
-----------------	---------

430-9B

Honda CRV	1997-01
-----------------	---------

430-10

Jaguar XJ6-3 Bolt Flng.....	1988-89
Lexus RX300.....	1999-03
Lexus RX330.....	2004-06
Lexus RX350.....	2007-09
Nissan 200SX.....	1978-84
Nissan 240SX.....	1989-93
Nissan 280ZX.....	1976-84
Nissan 810.....	1977-80
Nissan Maxima.....	1977-80
Nissan Pickup D21	1986-89
Subaru 3 Door Coupe.....	1986-89
Subaru Forester.....	1998-05

430-10 cont.

Subaru Hatchback.....	1985-89
Subaru Legacy	1990-99
Subaru Loyale	1990-93
Subaru Outback.....	1995-99
Subaru Sedan.....	1985-89
Subaru SVX.....	1992-96
Subaru Wagon.....	1985-89
Subaru XT/XT6.....	1985-90
Toyota Camry All-Trac	1988-91
Toyota Celica	1981-85
Toyota Corolla.....	1981-85
Toyota Corolla All-Trac.....	1988-92
Toyota Cressida.....	1985-88
Toyota Highlander (exc. Hybrid)	2001-07
Toyota Previa.....	1991-96
Toyota Sienna AWD.....	2004-10
Toyota Rav 4.....	1996-01

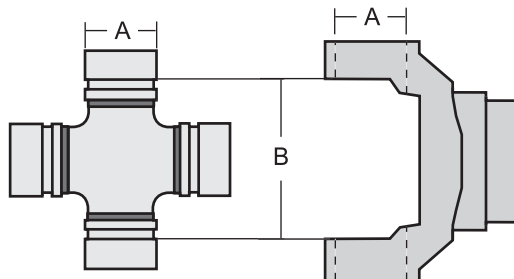
430-10A

Mazda Miata.....	1990-05
Mazda RX-7 (Exc. 87-91 Turbo)....	1984-91
Subaru Forester.....	2006-08

Measure Twice!!!

Take the time to double check the application before you press or cut out your original equipment u-joints... As hard as we try to provide you with the most accurate fitment information you should always know before you cut that the part you are replacing is going to solve the problem...

RDL Part No.	A Bearing Dia.	B Inside Lockup
430-9	.791	1.285
430-9A	.791	1.315
430-9B	.791	1.335
430-10	.867	1.400
430-10A	.867	1.515
430-10B	.867	1.725
430-10C	.867	1.670
430-11	.947	1.900
430-11A	.947	1.641
430-12	.972	1.641
430-12A	1.098	1.995
430-14*	1.063	1.780



Speciality “STAKED-IN” Universal Joints...

For over forty years automakers have decreased assembly time and cut production cost by crimping universal joints into the driveline assemblies. According to the manufacturer the joints are “STAKED-IN” and non-replaceable.

430-10B

Merkur Scorpio1988-89

430-10C

Honda Civic Wagon 4WD1988-91

430-11

BMW 735i1987-92
 BMW 750i1988-94
 BMW M51991-94
 Diahatsu Rocky (Rear)1990-92
 Mazda 9291988-95
 Mazda B20001979-84
 Mazda B20001986-89
 Mazda B22001979-84
 Mazda B22001987-93
 Mazda B26001987-93
 Mazda MPV (2WD).....1989-93
 Mazda RX7 Turbo.....1987-91

430-11A

BMW 535i1989-93
 Honda Ridgeline2006-08
 Nissan 300ZX (Exc. Twin Turbo) ...1984-89

430-12

Nissan 300ZX (Exc. Twin Turbo) ...1990-96
 Nissan 300ZX1987-89
 Nissan Pathfinder 4x4 (Rear)1991-95
 Nissan Pickup 4x4 (Rear)1991-93
 Nissan Pickup 2WD 4 cyl.1990-94
 Toyota Cressida.....1989-92

430-12A

BMW 740I1993-94
 BMW 740IL1993-94
 Infiniti Q451990-96
 Nissan 300ZX (Twin Turbo)1990-96

430-14*

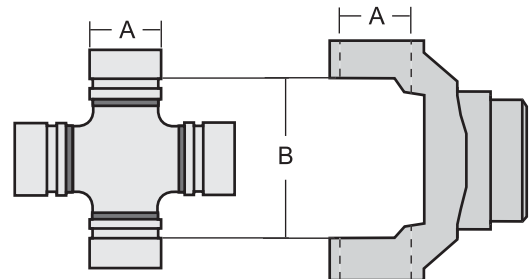
Jeep Commander2006-10
 Jeep Grand Cherokee2005-10

*430-14 is not a direct replacement - Inside snap rings fit the Aluminum weld yokes of rear driveshaft but machining is necessary for the mating steel flange yokes.

Measure Twice!!!

Take the time to double check the application before you press or cut out your original equipment u-joints... As hard as we try to provide you with the most accurate fitment information you should always know before you cut that the part you are replacing is going to solve the problem...

RDL Part No.	A Bearing Dia.	B Inside Lockup
430-9	.791	1.285
430-9A	.791	1.315
430-9B	.791	1.335
430-10	.867	1.400
430-10A	.867	1.515
430-10B	.867	1.725
430-10C	.867	1.670
430-11	.947	1.900
430-11A	.947	1.641
430-12	.972	1.641
430-12A	1.098	1.995
430-14*	1.063	1.780



Detroit Pot Style Joint...



K1400A -Assembly W/Housing

Ball Diameter	1.031
Pin Diameter565
Pin Length (pin only)	2.661
Pin Length (across retainers).....	3.034
Housing Height	3.045
Housing Flange Diameter	3.625
Housing Bolt Circle	2.875
Bolt Hole Diameter390



K1405A -Assembly W/Housing

Ball Diameter	1.031
Pin Diameter565
Pin Length (pin only)	2.878
Pin Length (across retainers).....	3.251
Housing Height	3.934
Housing Flange Diameter	4.000
Housing Bolt Circle	3.256
Bolt Hole Diameter390



K1407A -Assembly W/Housing

Ball Diameter	1.031
Pin Diameter565
Pin Length (pin only)	2.661
Pin Length (across retainers).....	3.034
Housing Height	3.750
Housing Flange Diameter	3.625
Housing Bolt Circle	2.875
Bolt Hole Diameter390



K1407 -Kit W/O Housing

Ball Diameter	1.031
Pin Diameter565
Pin Length (pin only)	2.661
Pin Length (across retainers).....	3.034
Housing Height	not included
Housing Flange Diameter	not included
Housing Bolt Circle	not included
Bolt Hole Diameter	not included

Notes:

Interchange List

Mfg. No.	Rkfd. No.	Mfg. No.	Rkfd. No.	Mfg. No.	Rkfd. No.	Mfg. No.	Rkfd. No.
GMB		GMB (cont.)		GMB (cont.)		L&S (New Alloy) (cont.)	
210-0105	K105	215-1204	K1204HD	230-8202	K8202	1067.....	K2173
210-0134	K134	215-1306	K1306HD	230-9000	K9000	1067.....	K242
210-0153	K153	215-1309	K1309HD	230-9001	K9001	1070.....	K170
210-0160	K160	215-1309	K1312	240-0231	K212	1071.....	K2011
210-0170	K170	215-3105	K3147HD	240-0231	K541A	1077.....	K2532
210-0178	K178	220-0006	K1507	240-0353	K353	1078.....	K178
210-0213	K521A	220-0007	K1504	240-0354	K354	1079.....	K2530
210-0248	K248	220-0009	K1513	240-0355	K355	1085.....	K212
210-0260	K260	220-0010	K1514	240-0356	K3022	1085.....	K3011
210-0278	K278	220-0011	K1500	240-0356	K544	1103.....	K1306-1
210-0297	K297	220-0012	K1508	240-0358	K460	1137.....	K1205
210-0332	K332	220-0013	K1502	240-0369	K527	1154.....	K278
210-0350	K350	220-0014	K1509	250-0600	K92	1178.....	403-0
210-0443	K443	22-00017	K1510	250-1200	K242	1179.....	403-01
210-0456	K456	220-0020	K1511	250-1400	K129	1180.....	403-02
210-0458	K458	220-0027	K1501	250-3500	K243	1740.....	K1301
210-1200	K1200	220-0029	K1505	260-0105	K27018	1741.....	K458
210-1201	K1201	220-0052	K1515	260-0121	K29428	1750.....	K160
210-1203	K1203	220-0081	K1503	260-0178	K39418	1751.....	K188
210-1204	K1204	220-0088	K1516	260-0266	K27038	1752.....	K165
210-1205	K1205	220-0500	K111	260-1204	K29458	1757.....	K115
210-1206	K1206	220-1100.....	K4	260-4105	K27028	1763.....	K1206
210-1210	K1210	230-0115.....	K115			1777.....	K92
210-1214	K1214	230-0124	K124	L&S (New Alloy)			
210-1300	K1300	230-0155	K155	1004.....	K153	1802.....	K280
210-1301	K1301	230-0165	K165	1006.....	K350	1804.....	K124
210-1306	K1306	230-0188	K188	1007.....	K332	1805.....	K155
210-1309	K1309	230-0279	K279	1008.....	K1513	1808.....	K407
210-2011.....	K2011	230-0280	K280	1010.....	K1200	1810.....	K281
210-2031	K2031	230-0281	K281	1012.....	K1201	1822.....	K6102
210-2140	K2140	230-0308	K308	1012.....	K1203	1826.....	K6106
210-2173	K2173	230-0407	K407	1013.....	K1204	1826.....	K6108
210-2500	K2532	230-4002	K4002	1014.....	K3147	1841.....	K7000
210-2530	K2530	230-4014	K4014	1016.....	K1516	1843.....	K7105
210-3105	K3011	230-5008	K5008	1019.....	K1306	1843.....	K7202
210-3105	K3147	230-5801	K5801	1020.....	K1309	1850.....	K8105
211-1306.....	K1306-1	230-5802	K5802	1021.....	K4	1866.....	K9001
215-0134	K134HD	230-6000	K6000	1027.....	K111	1876.....	K6000
215-0153	K153HD	230-6102	K6102	1027.....	K1515	1878.....	K5801
215-0160	K160HD	230-6106	K6106	1029.....	K1507	441004.....	K153HD
215-0178	K178HD	230-6108	K6108	1034.....	K134	41008.....	K1514
215-0260	K260HD	230-6109	K6109	1041.....	K248	41010.....	K1200HD
215-0297	K297HD	230-7000	K7000	1050.....	K1500	41012.....	K1201HD
215-0443	K443HD	230-7105	K7105	1051.....	K1505	41012.....	K1203HD
215-0456	K456HD	230-7202	K7202	1052.....	K1501	41013.....	K1204HD
215-0458	K458HD	230-7206	K7206	1052.....	K1504	41014.....	K3147HD
215-1200	K1200HD	230-8105	K8105	1057.....	K1503	41018.....	K1511
215-1201	K1201HD	230-8200	K8200	1058.....	K1508	41019.....	K1306HD
215-1203	K1203HD	230-8201	K8201	1061.....	K105	41020.....	K1309HD
						41034.....	K134HD

Interchange List

Mfg. No.	Rkfd. No.	Mfg. No.	Rkfd. No.	Mfg. No.	Rkfd. No.	Mfg. No.	Rkfd. No.
L&S (New Alloy) (cont.)		Motor Master (cont.)		Motor Master (cont.)		Motor Master (cont.)	
41048.....	K260	2387-BCK-2.....	K27038	3200-E.....	K350	4575-C.....	K5802
41048.....	K260HD	2387-E.....	K1306	3200-F.....	K278	5025-A.....	K6000
41053.....	K1502	2387-EA.....	K1306-1	3200-UBK-2.....	K29428	5025-B.....	K6106
41060.....	K1509	2387-EHP.....	K1306HD	3210-A.....	K297	5025-BAC.....	506-10
41078.....	K178HD	2525-A.....	K242	3210-ALB.....	K297HD	5025-J.....	K6102
41153.....	K353	2537-A.....	K129	3237-ACC.....	K521A	5025-K.....	K6109
41154.....	K279	2593-A.....	K243	3240-A.....	K178	5025-M.....	K6108
41741.....	K443	2800-A.....	K1500	3240-ACC.....	K447A	5050-A.....	K7000
41741.....	K443HD	2800-B.....	K1514	3240-AHP.....	K178HD	5050-CA.....	K7202
41741.....	K458HD	2825-A.....	K1501	3240-BCK-2.....	K37028	5050-DA.....	K7105
41742.....	K456	2825-B.....	K1502	3275-ACC.....	K134A	5050-F.....	K7206
41742.....	K456HD	2825-C.....	K1503	3275-ACC.....	K544	5050-K.....	507-10
41746.....	K460	2825-D.....	K1504	3275-ACC.....	K544A	5200-AG.....	K279
41750.....	K160HD	2852-A.....	K1513	3275-AE.....	K134	5218-A.....	K165
41761.....	K297	2872-A.....	K1515	3275-BCC.....	K720A	5278-AG.....	K280
41761.....	K297HD	2875-A.....	K1516	3287-A.....	K188	6228-AG.....	K124
41780.....	K129	2875-BAL.....	K721	3287-C.....	K332	6269-A.....	K407
41781.....	K243	2875-BL.....	K1510	3287-CLB.....	K332HD	7075-A.....	K8200
51042.....	K541A	2887-A.....	K1505	3290-A.....	K160	7075-B.....	K8105
51699.....	K1510	2887-B.....	K1508	3290-AHP.....	K160HD	7075-F.....	K8201
51699.....	K3022	2887-C.....	K1509	3290-UBK-2.....	K39418	7075-G.....	K8202
51699.....	K544A	2887-D.....	K1507	3331-A.....	K1309	7075-H.....	K9000
4996S.....	K29428	3031-B.....	K3011	3331-AHP.....	K1309HD	7075-HB.....	K9001
5821S.....	K27038	3031-B.....	K3147	3400-A.....	K1200	7075-J.....	K8208
6013S.....	K29458	3031-BCK-2.....	K27028	3400-AHP.....	K1200HD	7225-AG.....	K281
6025S.....	K27018	3031-BHP.....	K3147HD	3400-B.....	K1201	7244-DA.....	K308
6026S.....	K27028	3031-BLB.....	K3147-1	3400-BHP.....	K1201HD	MR-60.....	K1400A
		3031-VCC.....	K541A	3437-A.....	K1205	MR-65.....	K1405A
		3100-A.....	K353	3437-C.....	K1204	MR-67.....	K1407A
		3130-A.....	K3022	3437-CHP.....	K1204HD	MR-67A.....	K1407
		3131-A.....	K354	3437-D.....	K1203	Neapco	
		3133-A.....	K3163	3437-DHP.....	K1203HD	1-0005.....	K4
		3133-B.....	K1312	3437-DLB.....	K1203-1	1-0012.....	K1508
		3133-C.....	K527	3437-UBK-2.....	K29458	1-0013.....	K1502
		3137-B.....	K355	3493-A.....	K1206	1-0014.....	K1509
		3137-BCC.....	K355A	3493-B.....	K1214	1-0023.....	K27038
		3137-C.....	K212	3834-A.....	K1511	1-0024.....	K27018
		3140-B.....	K460	4000-A.....	K4002	1-0025.....	K27028
		3140-C.....	K648	4000-B.....	K4015	1-0027.....	K1501
		3140-D.....	K3162	4000-J.....	K4014	1-0028.....	K1500
		3140-E.....	K1313	4025-A.....	K5000	1-0029.....	K1505
		3190-A.....	K357	4025-D.....	K5008	1-0049.....	K449
		3200-A.....	K153	4025-H.....	505-10	1-0089.....	K29428
		3200-ACC.....	K467A	4225-A.....	K115	1-0099.....	K39418
		3200-AHP.....	K153HD	4265-A.....	K155	1-0105.....	K105
		3200-AHP.....	K529	4265-UBK-2.....	K39428	1-0109.....	K39428
		3200-ALB.....	K153-1	4300-A.....	K1301	1-0134.....	K134
		3200-D.....	K260	4465-A.....	K1210	1-0134BF.....	K134HD
		3200-DLB.....	K260HD	4575-B.....	K5801	1-0153.....	K153
Motor Master							
1587-A.....	K92						
2060-C.....	K2031						
2060-D.....	K2011						
2060-V.....	K2532						
2060-VF.....	K2530						
2060-W.....	K2140						
2060-WF.....	K2173						
2119-A.....	K443HD						
2119-A.....	K456						
2119-BCK-2.....	K27018						
2207-A.....	K170						
2225-B.....	K111						
2225-D.....	K111						
2225-E.....	K443						
2225-E.....	K458						
2225-ELB.....	K443-1						
2225-W.....	K248						
2226-A.....	K105						
2275-B.....	K4						
2375-D.....	K1300						

Interchange List

Mfg. No.	Rkfd. No.	Mfg. No.	Rkfd. No.	Mfg. No.	Rkfd. No.	Mfg. No.	Rkfd. No.
Neapco (cont.)		Neapco (cont.)		Neapco (cont.)		Precision (cont.)	
1-0153BF.....	K153HD	2-1400.....	K1300	6-0124.....	K124	359.....	K165
1-0154.....	K153-1	2-1569.....	K212	6-0281.....	K281	360-10.....	K27018
1-0170.....	K170	2-2275.....	K243	6-0407.....	K407	361.....	K248
1-0174.....	K260	2-2518.....	K2530	6-8113.....	K8105	362.....	K357
1-0174BF.....	K260HD	2-3010.....	K3147-1	6-8205.....	K8200	365.....	K260
1-0189.....	K29458	2-3011.....	K3147	6-8207.....	K8202	369.....	K153
1-0248.....	K248	2-3011BF.....	K3147HD	6-8208.....	K8208	371.....	K297
1-0278.....	K278	2-3049.....	K1312	6-9014.....	K9000	372.....	K3022
1-0297.....	K297	2-3050.....	K3050	6-9016.....	K9001	374.....	K332
1-0297BF.....	K297HD	2-3100.....	K353	Precision			
1-0300.....	K111	2-3111.....	K3011	217R.....	K1407	375.....	K1312
1-0350.....	K350	2-3190.....	K357	232.....	K178HD	376.....	K407
1-0443.....	K443	2-3500.....	K2031	235.....	K3147HD	377.....	K297HD
1-0443BF.....	K443HD	2-4800.....	K1203	240.....	K443HD	379.....	K278
1-0458.....	K458	2-4800BF.....	K1203-1	246.....	K1306HD	380.....	K153-1
1-0458BF.....	K458HD	2-4801.....	K1203HD	248.....	K1309HD	381.....	K281
1-1275.....	K242	2-4900.....	K1204	250.....	K1200HD	383.....	K1515
1-1475.....	K92	2-4900BF.....	K1204HD	253.....	K134HD	384.....	K1507
1-1516.....	K1516	2-5374.....	K529	255.....	K1201HD	385.....	K1514
1-1557.....	K1503	2-6200.....	K1205	265.....	K1204HD	386.....	K1513
1-1604.....	K1514	2-6600.....	K1206	270.....	K1203HD	387.....	K1510
1-1606.....	K1504	3-0055.....	K115	280.....	K153HD	388.....	K308
1-1608.....	K1513	3-0056.....	K1301	304.....	K1301	389.....	K1511
1-1610.....	K1507	3-0155.....	K155	305.....	K1300	390.....	K1508
1-1612.....	K1510	3-0188.....	K188	315G.....	K1306	391.....	K1501
1-2075.....	K129	3-0332.....	K332	316.....	K1309	392.....	K1500
1-2173.....	K2173	3-3130.....	K3022	317.....	K1306-1	393.....	K1505
1-3600.....	K2011	3-3131.....	K354	318-10.....	K27038	394.....	K1502
1-3650.....	K2140	3-3133.....	K3163	319.....	K353	396.....	K1509
1-4635.....	K1201	3-3140.....	K460	329-10.....	K29428	397.....	K1504
1-4635BF.....	K1201HD	3-4138.....	K4002	330.....	K160	398.....	K1503
1-5800.....	K2532	3-4152.....	K4014	330-10.....	K39418	399.....	K1516
1-5900.....	K1200	3-5132.....	K5008	331.....	K178	423.....	K1205
1-5900BF.....	K1200HD	3-6700.....	K1214	331-10.....	K37028	427.....	K1206
1-6300.....	K1306-1	3-6800.....	K1210	332.....	K115	428.....	K1214
1-6301.....	K1306	4-0165.....	K165	333.....	K279	429.....	K1200
1-6301BF.....	K1306HD	4-0279.....	K279	334.....	K280	430.....	K1201
2-0020.....	K1511	4-5122.....	K5000	335.....	K124	432.....	K1210
2-0053.....	K178	4-5801.....	K5801	338.....	K170	434.....	K1204
2-0053BF.....	K178HD	4-5802.....	K5802	341.....	K111	436.....	K456
2-0054.....	K160	4-6114.....	K6102	344.....	K4	437.....	K443
2-0355.....	K355	4-6128.....	K6106	347.....	K527	437G.....	K443-1
2-0383.....	K1515	4-6143.....	K6000	348.....	K460	437.....	K458
2-0456.....	K456	4-6162.....	K6108	351.....	K188	445.....	K350
2-0456BF.....	K456HD	4-6163.....	K6109	353.....	K134	446.....	K449
2-0527.....	K527	5-0280.....	K280	354.....	K1203	447.....	K3162
2-1153.....	K3162	5-7126.....	K7105	355.....	K212	448.....	K3050
2-1175.....	K1309	5-7205.....	K7000	358.....	K155	448.....	K648
2-1175BF.....	K1309HD	5-7207.....	K7202	358-10.....	K39428	449.....	K354
						455.....	K529

Interchange List

Mfg. No.	Rkfd. No.	Mfg. No.	Rkfd. No.	Mfg. No.	Rkfd. No.	Mfg. No.	Rkfd. No.
Precision (cont.)		Rockford (Old #) Cont.		Spicer (cont.)		Spicer (cont.)	
457.....	K720	K1203AC.....	K648A	5-357X.....	K357	5-1513X.....	K1513
458.....	K355	400.....	K3147	5-407X.....	K407	5-1514X.....	K1514
481.....	506-10	407-10.....	K2532	5-443X.....	K443	5-1515X.....	K1515
492.....	K3011	407-11.....	K1510	5-449X.....	K449	5-1516X.....	K1516
492-10.....	K27028	407-12.....	K2532	5-456X.....	K456	5-2011X.....	K2011
497.....	K2530	407-13.....	K721	5-458X.....	K458	5-2031X.....	K2031
498.....	K2173	430-13.....	K1504	5-460X.....	K460	5-2140X.....	K2140
505.....	K2140			5-467X.....	K153HD	5-2173X.....	K2173
507.....	K2011	Spicer		5-521X.....	K521A	5-2530X.....	K2530
508.....	K2031	2-70-18X.....	K27018	5-527X.....	K527	5-2532X.....	K2532
513.....	K2532	2-70-28X.....	K27028	5-529X.....	K529	5-3011X.....	K3011
514.....	K105	2-70-38X.....	K27038	5-541X.....	K541A	5-3022X.....	K3022
534G.....	K3147	2-94-28X.....	K29428	5-544U.....	K544A	5-3031X.....	K3031
534-10.....	K29458	2-94-58X.....	K29458	5-544X.....	K544	5-3147-1X.....	K3147-1
540.....	K4002	3-70-28X.....	K37028	5-648X.....	K648	5-3147HP.....	K3147HD
544.....	K4014	3-94-18X.....	K39418	5-720X.....	K720A	5-3147X.....	K3147
545.....	K4015	3-94-28X.....	K39428	5-721X.....	K721	5-3162X.....	K3162
550.....	K5000	5-4X.....	K4	5-1200HP.....	K1200HD	5-3163X.....	K3163
554.....	K5008	5-92X.....	K92	5-1200X.....	K1200	5-4002X.....	K4002
560.....	K6000	5-102X.....	K111	5-1201X.....	K1201	5-4014X.....	K4014
563.....	K6102	5-105X.....	K105	5-1203-1X.....	K1203-1	5-4015X.....	K4015
568.....	K6108	5-111X.....	K111	5-1203HP.....	K1203HD	5-5008X.....	K5008
569.....	K6109	5-115X.....	K115	5-1203X.....	K1203	5-5000X.....	K5000
570.....	K7000	5-124X.....	K124	5-1204X.....	K1204	5-5801X.....	K5801
572.....	K7206	5-129X.....	K129	5-1205X.....	K1205	5-5802X.....	K5802
574.....	K7202	5-134X.....	K134	5-1206X.....	K1206	5-6000X.....	K6000
581.....	K8200	5-153X.....	K153	5-1210X.....	K1210	5-6102X.....	K6102
582.....	K8201	5-155X.....	K155	5-1214X.....	K1214	5-6106X.....	K6106
583.....	K8202	5-160X.....	K160	5-1300X.....	K1300	5-6108X.....	K6108
793.....	K9000	5-165X.....	K165	5-1301X.....	K1301	5-6109X.....	K6109
861.....	K92	5-170X.....	K170	5-1306-1X.....	K1306-1	5-7000X.....	K7000
880.....	K129	5-178X.....	K178	5-1306HP.....	K1306HD	5-7105X.....	K7105
895.....	K5801	5-188X.....	K188	5-1306X.....	K1306	5-7202X.....	K7202
896.....	K5802	5-212X.....	K212	5-1309X.....	K1309	5-7206X.....	K7206
905.....	K6106	5-242X.....	K242	5-1312X.....	K1312	5-8105X.....	K8105
911.....	K9001	5-243X.....	K243	5-1313X.....	K1313	5-8200X.....	K8200
923.....	507-10	5-248X.....	K248	5-1405X.....	K1405	5-8201X.....	K8201
927.....	K7105	5-260X.....	K260	5-1407X.....	K1407	5-8202X.....	K8202
928.....	K8105	5-278X.....	K278	5-1500X.....	K1500	5-8208X.....	K8208
958.....	505-10	5-279X.....	K279	5-1501X.....	K1501	5-9000X.....	K9000
964.....	K243	5-280X.....	K280	5-1502X.....	K1502	5-9001X.....	K9001
995.....	K242	5-281X.....	K281	5-1503X.....	K1503		
		5-297X.....	K297	5-1504X.....	K1504		
Rockford (Old Numbers)		5-308X.....	K308	5-1505X.....	K1505		
K153A.....	K467A	5-332X.....	K332	5-1507X.....	K1507		
K153AC.....	K134A	5-350X.....	K350	5-1508X.....	K1508		
K178A.....	K447A	5-353X.....	K353	5-1509X.....	K1509		
K315X.....	K443	5-354X.....	K354	5-1510X.....	K1510		
K1203A.....	K521A	5-355X.....	K355	5-1511X.....	K1511		



Notes:

Notes:

U-Joint to Specifications Lookup

Rkfd. No.	Spec. Pg.	Rkfd. No.	Spec. Pg.	Rkfd. No.	Spec. Pg.
430-9	11, 28	K1203-1	8, 12, 16	K2011	11
430-9A	11, 28	K1203HD	9, 12, 16	K2031	26
430-9B	11, 28	K1204	10, 17	K212	17
430-10	11, 28	K1204HD	10, 17	K2140	16
430-10A	11, 28	K1205	9, 13, 18	K2173	15
430-10B	11, 29	K1206	9, 13, 18	K242	12
430-10C	11, 29	K1210	21	K243	9
430-11	11, 29	K1214	21	K248	16
430-11A	11, 29	K124	19	K2530	17
430-12	11, 29	K129	9	K2532	12
430-12A	12, 29	K1300	13	K2540*	9
430-14*	12, 29	K1301	13	K260	12
505-10	13	K1306	12	K260HD	12
506-10	22	K1306-1	12	K278	8
506-11	22	K1306HD	12	K279	19
507-10	14	K1309	13	K280	19
K0408*	8	K1309HD	13	K281	19
K0412*	13	K1312	17	K297	13
K0411	13	K1313	18	K297-1	13
K0450	13	K134	10	K297HD	13
K0451	9	K134A	10	K3011	12
K0471	9	K134HD	10	K3022	15, 17
K0483	27	K1400*	30	K3031	21
K0485	22	K1405A*	30	K3050	10
K0486	22	K1407*	30	K308	19
K0487	24	K1407A*	30	K3147	12
K0535	23	K1435*	10	K3147-1	12
K0545	13	K1485*	9, 13	K3147A	12
K0546	26	K1500	8, 11, 16	K3147HD	12
K0565	27	K1501	11	K3162	18
K0566	23	K1502	11	K3163	15
K0567	13	K1503	8	K332	13
K0818	9	K1504	11	K332HD	13
K0819	9	K1505	12	K350	12
K0820	9	K1507	12	K353	16
K0840	15	K1508	11	K354	15, 17
K0853	8	K1509	9	K355	15, 17
K0856	8	K1510	13	K355A	15, 17
K0890	21	K1510HD	13	K357	18
K0898	9	K1511	13	K4	8
K0899	9	K1513	11	K4002	23
K0931	27	K1514	11	K4014	26
K0932	9	K1515	13	K4015	12
K0950	25	K1516	8	K407	19
K0957	26	K153	8	K438	20
K0966	25	K153-1	8	K443	8
K0967	22	K153HD	8	K443-1	8
K0998	27	K155	9	K443HD	8
K105	11	K160	9	K447A	9
K111	8	K160A	9	K447AHD	9
K115	19	K160HD	9	K449	12
K1200	8, 12, 16	K170	11	K456	11, 16
K1200HD	8, 12, 16	K170-1	11	K456HD	11
K1201	10, 16	K178	9	K458	8
K1201HD	10, 16	K178HD	9	K458HD	8
K1203	8, 12, 16	K188	9	K460	10

*NEW ADDITION TO CATALOG

U-Joint to Specifications Lookup

Rkfd. No.	Spec. Pg.	Rkfd. No.	Spec. Pg.	Rkfd. No.	Spec. Pg.
K467A.....	8				
K469.....	20				
K5000.....	23				
K5008.....	26				
K510.....	20				
K515.....	20				
K521A.....	8				
K527.....	15				
K529.....	16				
K541A.....	17				
K544.....	15, 17				
K544A.....	15, 17				
K5801.....	23				
K5802.....	25				
K6000.....	23				
K6102.....	25				
K6106.....	22				
K6108.....	23				
K6109.....	25				
K648.....	10, 17				
K648A.....	10, 17				
K674.....	20				
K675.....	20				
K676.....	20				
K677.....	20				
K7000.....	23				
K7105.....	22				
K720.....	16				
K720A.....	16				
K7202.....	25				
K7206.....	23				
K721.....	17				
K8105.....	22				
K8200.....	23				
K8201.....	24				
K8202.....	25				
K8208.....	23				
K9000.....	24				
K9001.....	22				
K92.....	11				
KR100*.....	12				
KR101*.....	11				
KR102*.....	13				
KR103*.....	14				
KR104*.....	13				
KR105*.....	13				
KR200*.....	8				
KR201*.....	8				

***NEW ADDITION TO CATALOG**

MANUFACTURER OF DRIVELINE COMPONENTS
1500 11TH AVENUE ROCKFORD, ILLINOIS 61104
PHONE (815) 962-1411 FAX (815) 965-4857
RockfordDriveLine.com